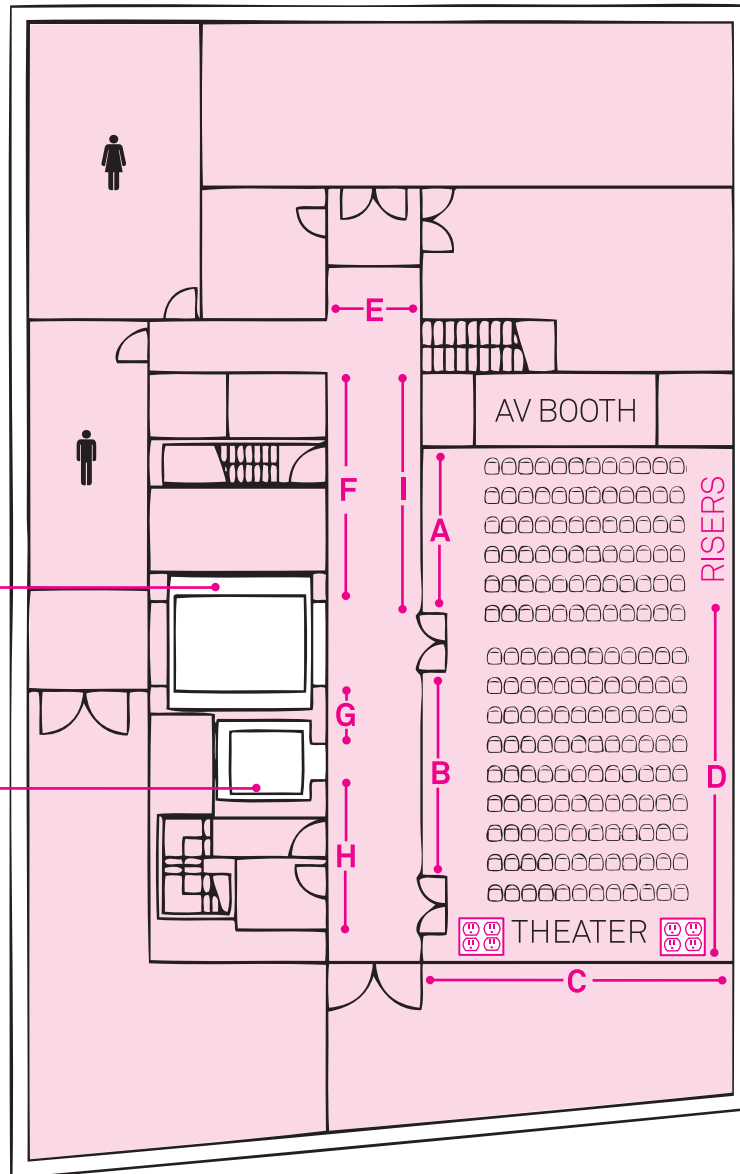
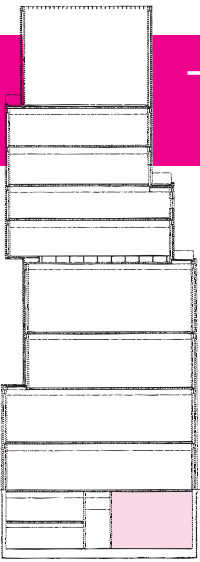


# Theater / Lower Level



## LARGE ELEVATOR

- 12' high x 8' 10" wide x 10' 9" deep
- Load capacity: 12,000 lbs
- Maximum size crate allowed through loading entrance is 9'x9'
- Passenger and freight

## SMALL ELEVATOR

- 10' high x 5' 8" wide x 6' 5" deep
- Load capacity: 3,500 lbs
- No pads allowed
- Dedicated passenger

## MEASUREMENTS

- A 14' 9"
- B 18' 3"
- C 25' ½"
- D 32' 8"
- E 5' 4"
- F 21' 8"
- G 5' 3"
- H 17' 5"
- I 22' 10"

Capacity= 180 theater seats  
205 cocktails  
156 with stage

5 risers= 3' deep

Ceiling height = 17' high

Stage dimensions = variable

 ELECTRICAL OUTLETS\*

\*Information on technical capabilities and electrical power in the AV Booth available upon request.

**NEW**  
**235 BOWERY**  
**NEW YORK NY**  
**10002 USA**  
**MUSEUM**

newmuseum.org

Special Events Department  
212.219.1222 x254  
events@newmuseum.org